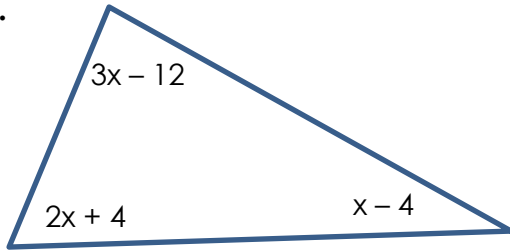


YEAR 11 MINI-ASSESSMENT 3

HIGHER – SHAPE

None of these diagrams are drawn accurately

1.



Write down a suitable equation and use it to find the value of x .

[3 marks]

2.

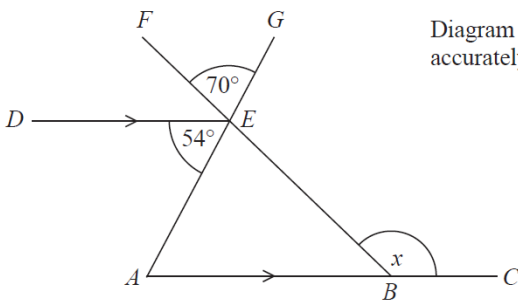


Diagram **NOT** accurately drawn

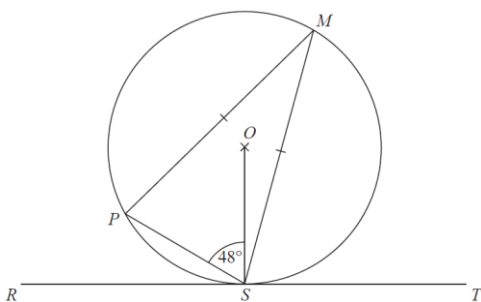
ABC and DE are parallel lines.
 AEG and BEF are straight lines.

Angle $AED = 54^\circ$
Angle $FEG = 70^\circ$

Work out the size of the angle marked x .
Give a reason for each stage of your working.

[4 marks]

3.



P , M and S are points on a circle, centre O . RST is a tangent to the circle.

Angle $PSO = 48^\circ$
 $MP = MS$

Work out the size of angle MST .
Give reasons for each stage of your working.

[5 marks]